

## **Cook St between Quadra St and Linwood Ave**

**November 24, 2020 To November 27, 2020**



The data presented here is for information purposes only and should not be considered authoritative for construction, geotechnical, engineering, navigational, legal, or other site-specific uses. The information shared is owned by the Transportation Division of the Engineering Department at the District of Saanich. Accuracy is not guaranteed.

Start Date: 23-Nov-20  
 Start Time: 0:05  
 Station ID: M0011-01

**Location 1: Cook St between Quadra St and Linwood Ave**

Note:

DATE:	November 23, 2020		November 24, 2020		November 25, 2020		November 26, 2020		November 27, 2020		WK AVG		WK AVG	HOURLY
	MON		TUE		WED		THURS		FRI		NB	SB	CH 1+2	%
Time:	NB	SB	NB	SB	NB	SB	NB	SB	NB	SB	NB	SB		
12-1 AM			7	19	25	14	19	24			17	19	36	0.3%
1-2 AM			13	9	9	9	16	11			13	10	22	0.2%
2-3 AM			12	10	11	10	9	8			11	9	20	0.1%
3-4 AM			9	5	12	8	9	5			10	6	16	0.1%
4-5 AM			24	9	21	9	20	11			22	10	31	0.2%
5-6 AM			60	44	59	40	60	36			60	40	100	0.7%
6-7 AM			176	175	185	166	196	160			186	167	353	2.6%
7-8 AM			453	393	432	384	438	388			441	388	829	6.2%
8-9 AM			657	523	564	498	565	500			595	507	1102	8.2%
9-10 AM			448	434	412	425	462	426			441	428	869	6.5%
10-11 AM			497	405	465	405	438	408			467	406	873	6.5%
11-12 PM			484	480	480	434	470	437			478	450	928	6.9%
12-1 PM			529	489	488	486	536	461			518	479	996	7.4%
1-2 PM			480	434	476	430	459	471			472	445	917	6.8%
2-3 PM			540	507	562	563	575	519			559	530	1089	8.1%
3-4 PM			628	558	681	614	623	559			644	577	1221	9.1%
4-5 PM			596	601	645	567	674	590			638	586	1224	9.1%
5-6 PM			479	522	504	483	475	511			486	505	991	7.4%
6-7 PM			291	285	310	286	332	321			311	297	608	4.5%
7-8 PM			198	210	212	205	215	211			208	209	417	3.1%
8-9 PM			145	146	162	161	172	152			160	153	313	2.3%
9-10 PM			101	109	103	87	137	124			114	107	220	1.6%
10-11 PM			62	62	76	71	57	86			65	73	138	1.0%
11-12 AM			44	33	46	43	33	33			41	36	77	0.6%
<b>LANES</b>			<b>6933</b>	<b>6462</b>	<b>6940</b>	<b>6398</b>	<b>6990</b>	<b>6452</b>			<b>6954</b>	<b>6437</b>	<b>13392</b>	<b>100.0%</b>
<b>TOTAL</b>			<b>13395</b>		<b>13338</b>		<b>13442</b>				<b>13400</b>			
	MON		TUE		WED		THURS		FRI		WK AVG			

PEAK HOUR					TOTAL VEHICALS-PEAK PERIODS		2 HOUR PEAK INTERVALS				
MAX. 7 - 9 am PEAK HOUR	1102	⇒	8.2%	between 8-9 AM	6072	⇒	6 HR TOTAL	<b>2 HR AM (7 - 9 AM)</b>			
MAX. 7 - 11 am PEAK HOUR	1102	⇒	8.2%	between 8-9 AM	4147	⇒	4 HR TOTAL	VEH / HR	VEH / 2HR	2 HR %	
								7-8 AM	829	1932	14.4%
								8-9 AM	1102		
MAX. 11 am - 1 pm PEAK HOUR	996	⇒	7.4%	between 12-1 PM	<b>24 HOUR FACTORS</b>						
MAX. 11 am - 3 pm PEAK HOUR	1089	⇒	8.1%	between 2-3 PM	2.21	⇒	6-24 HR FACT.	<b>2 HR NOON (11 - 1 PM)</b>			
MAX. 4 - 6 pm PEAK HOUR	1224	⇒	9.1%	between 4-5 PM	VEH / HR						
MAX. 3 - 6 pm PEAK HOUR	1224	⇒	9.1%	between 4-5 PM	VEH / 2HR						
					2 HR %						
					11-12 PM 928 1925 14.4%						
					12-1 PM 996						
					<b>2 HR PM (4 - 6 PM)</b>						
					VEH / HR						
					VEH / 2HR						
					2 HR %						
					4-5 PM 1224 2216 16.5%						
					5-6 PM 991						

# Cook St between Quadra St and Linwood Ave

Northbound

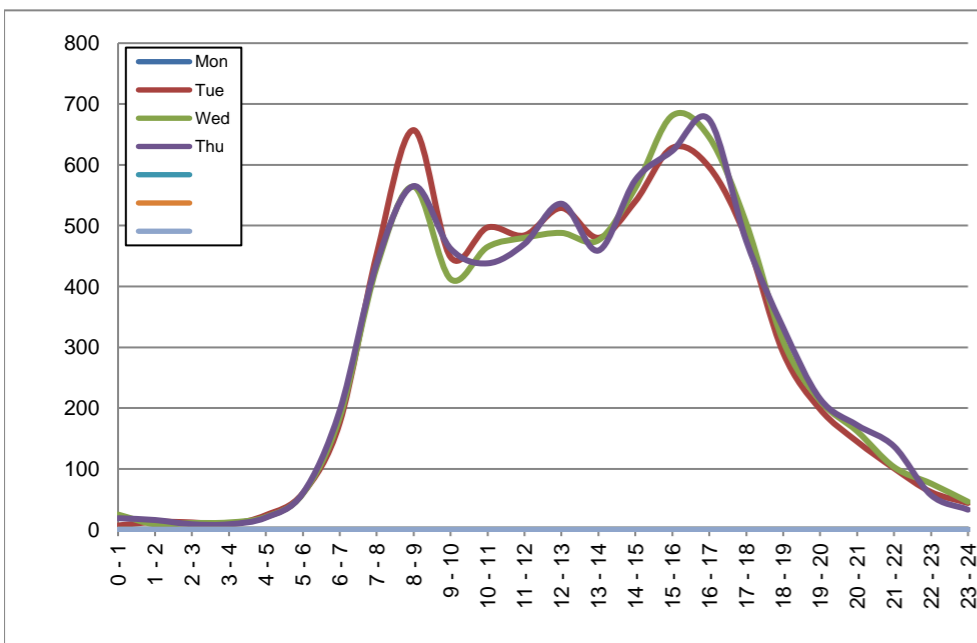
November 23, 2020 to November 26, 2020

## Hourly Volumes

Time Period	Mon	Tue	Wed	Thu			
	Nov 23	Nov 24	Nov 25	Nov 26			
0 - 1		7	25	19			
1 - 2		13	9	16			
2 - 3		12	11	9			
3 - 4		9	12	9			
4 - 5		24	21	20			
5 - 6		60	59	60			
6 - 7		176	185	196			
7 - 8		453	432	438			
8 - 9		657	564	565			
9 - 10		448	412	462			
10 - 11		497	465	438			
11 - 12		484	480	470			
12 - 13		529	488	536			
13 - 14		480	476	459			
14 - 15		540	562	575			
15 - 16		628	681	623			
16 - 17		596	645	674			
17 - 18		479	504	475			
18 - 19		291	310	332			
19 - 20		198	212	215			
20 - 21		145	162	172			
21 - 22		101	103	137			
22 - 23		62	76	57			
23 - 24		44	46	33			
<b>Day Total</b>		<b>6933</b>	<b>6940</b>	<b>6990</b>			

## 15-Minute Volumes

Time Start	Mon	Tue	Wed	Thu				Time Start	Mon	Tue	Wed	Thu			
	Nov 23	Nov 24	Nov 25	Nov 26					Nov 23	Nov 24	Nov 25	Nov 26			
0:00		1	10	8				12:00		111	121	117			
0:15		3	6	3				12:15		139	115	142			
0:30		2	4	1				12:30		127	128	130			
0:45		1	5	7				12:45		152	124	147			
1:00		3	6	6				13:00		123	103	115			
1:15		2	1	5				13:15		91	116	122			
1:30		4	2	3				13:30		137	128	115			
1:45		4	0	2				13:45		129	129	107			
2:00		2	3	2				14:00		119	141	142			
2:15		3	3	2				14:15		135	131	151			
2:30		5	3	2				14:30		149	151	126			
2:45		2	2	3				14:45		137	139	156			
3:00		0	3	1				15:00		168	169	132			
3:15		1	0	2				15:15		154	164	160			
3:30		3	2	2				15:30		143	174	166			
3:45		5	7	4				15:45		163	174	165			
4:00		4	7	4				16:00		155	147	160			
4:15		3	1	3				16:15		146	158	177			
4:30		6	6	6				16:30		152	161	183			
4:45		11	7	7				16:45		143	179	154			
5:00		7	6	7				17:00		124	163	133			
5:15		12	9	17				17:15		143	130	134			
5:30		16	22	14				17:30		124	117	119			
5:45		25	22	22				17:45		88	94	89			
6:00		27	26	32				18:00		93	107	95			
6:15		36	32	45				18:15		86	95	88			
6:30		65	52	57				18:30		64	57	65			
6:45		48	75	62				18:45		48	51	84			
7:00		85	85	73				19:00		54	63	63			
7:15		96	85	107				19:15		48	64	54			
7:30		118	97	112				19:30		54	49	51			
7:45		154	165	146				19:45		42	36	47			
8:00		173	135	136				20:00		51	55	55			
8:15		147	149	156				20:15		36	29	43			
8:30		161	137	133				20:30		26	35	40			
8:45		176	143	140				20:45		32	43	34			
9:00		130	101	117				21:00		29	32	48			
9:15		111	97	103				21:15		25	25	30			
9:30		98	106	115				21:30		28	28	30			
9:45		109	108	127				21:45		19	18	29			
10:00		125	102	110				22:00		24	22	26			
10:15		113	114	109				22:15		17	18	10			
10:30		133	125	110				22:30		13	21	10			
10:45		126	124	109				22:45		8	15	11			
11:00		119	126	115				23:00		26	23	19			
11:15		127	123	103				23:15		11	7	9			
11:30		123	100	134				23:30		4	10	2			
11:45		115	131	118				23:45		3	6	3			



Site notes:

# Cook St between Quadra St and Linwood Ave

Southbound

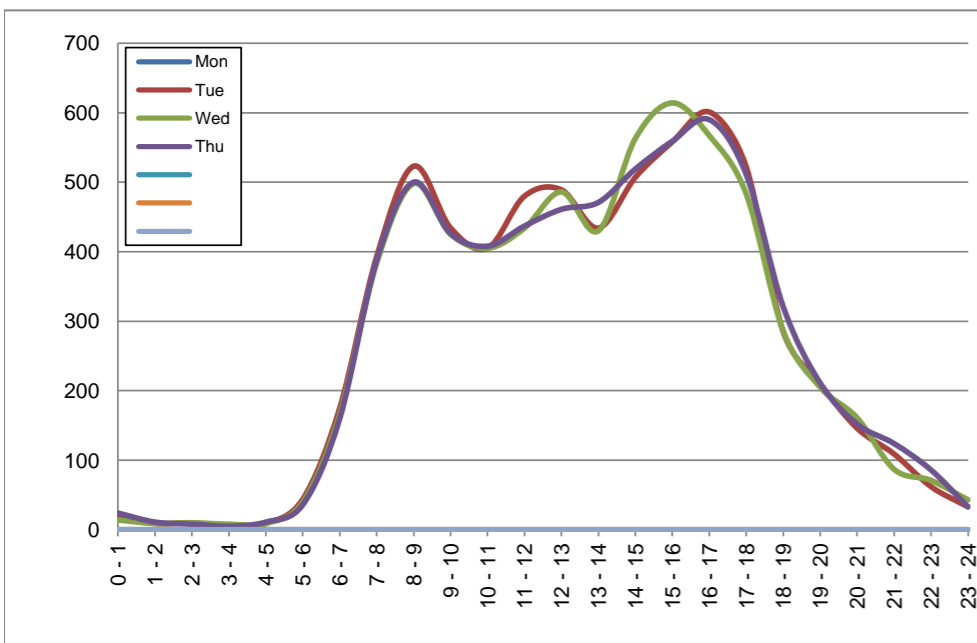
November 23, 2020 to November 26, 2020

## Hourly Volumes

Time Period	Mon	Tue	Wed	Thu			
	Nov 23	Nov 24	Nov 25	Nov 26			
0 - 1		19	14	24			
1 - 2		9	9	11			
2 - 3		10	10	8			
3 - 4		5	8	5			
4 - 5		9	9	11			
5 - 6		44	40	36			
6 - 7		175	166	160			
7 - 8		393	384	388			
8 - 9		523	498	500			
9 - 10		434	425	426			
10 - 11		405	405	408			
11 - 12		480	434	437			
12 - 13		489	486	461			
13 - 14		434	430	471			
14 - 15		507	563	519			
15 - 16		558	614	559			
16 - 17		601	567	590			
17 - 18		522	483	511			
18 - 19		285	286	321			
19 - 20		210	205	211			
20 - 21		146	161	152			
21 - 22		109	87	124			
22 - 23		62	71	86			
23 - 24		33	43	33			
<b>Day Total</b>		<b>6462</b>	<b>6398</b>	<b>6452</b>			

## 15-Minute Volumes

Time Start	Mon	Tue	Wed	Thu			
	Nov 23	Nov 24	Nov 25	Nov 26			
0:00		6	4	4			
0:15		7	5	7			
0:30		1	5	7			
0:45		5	0	6			
1:00		3	3	2			
1:15		4	2	4			
1:30		1	1	3			
1:45		1	3	2			
2:00		4	5	2			
2:15		1	1	2			
2:30		1	2	2			
2:45		4	2	2			
3:00		1	2	0			
3:15		0	1	1			
3:30		3	0	3			
3:45		1	5	1			
4:00		0	1	4			
4:15		2	2	3			
4:30		4	3	1			
4:45		3	3	3			
5:00		5	3	2			
5:15		6	6	7			
5:30		14	12	9			
5:45		19	19	18			
6:00		24	18	22			
6:15		30	29	31			
6:30		59	51	49			
6:45		62	68	58			
7:00		67	62	66			
7:15		86	83	89			
7:30		113	105	110			
7:45		127	134	123			
8:00		132	142	120			
8:15		115	117	105			
8:30		138	124	125			
8:45		138	115	150			
9:00		109	119	121			
9:15		111	116	117			
9:30		99	97	95			
9:45		115	93	93			
10:00		105	99	101			
10:15		118	94	98			
10:30		94	110	106			
10:45		88	102	103			
11:00		114	103	87			
11:15		107	105	119			
11:30		122	112	111			
11:45		137	114	120			
12:00			112	139	105		
12:15			117	109	118		
12:30			129	117	110		
12:45			131	121	128		
13:00			100	114	105		
13:15			117	109	112		
13:30			111	113	127		
13:45			106	94	127		
14:00			121	129	111		
14:15			108	128	121		
14:30			155	138	155		
14:45			123	168	132		
15:00			128	147	132		
15:15			130	150	132		
15:30			140	147	154		
15:45			160	170	141		
16:00			142	136	148		
16:15			145	126	158		
16:30			148	167	147		
16:45			166	138	137		
17:00			154	141	143		
17:15			132	123	149		
17:30			126	112	127		
17:45			110	107	92		
18:00			86	90	88		
18:15			80	61	81		
18:30			67	71	84		
18:45			52	64	68		
19:00			48	52	57		
19:15			67	62	55		
19:30			43	53	55		
19:45			52	38	44		
20:00			46	48	48		
20:15			42	28	56		
20:30			28	46	25		
20:45			30	39	23		
21:00			39	31	38		
21:15			36	28	29		
21:30			18	14	32		
21:45			16	14	25		
22:00			25	27	32		
22:15			15	13	19		
22:30			11	22	16		
22:45			11	9	19		
23:00			19	13	15		
23:15			8	16	7		
23:30			3	9	8		
23:45			3	5	3		



Site notes:

# Vehicle Speed Summary

Saanich Engineering Department

Count Id: M0011-01

Filename: Cook St between Quadra St and Linwood Ave-Nov-2020.xlsm

**Location:** Cook St between Quadra St and Linwood Ave

Note:

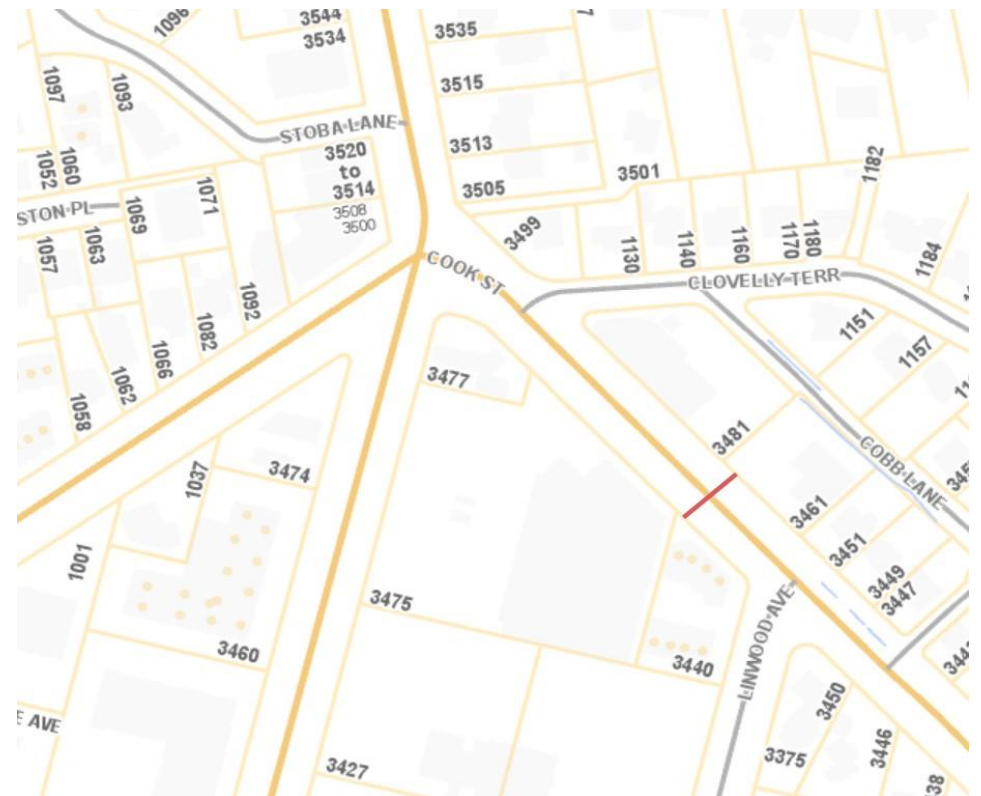
Direction: **North-South**

Dates: **November 24, 2020 To November 27, 2020**

*Filtered data*

AVG. SPEED	<b>25</b> mph	<b>41</b> km/h
50 % SPEED	<b>26</b> mph	<b>42</b> km/h
85 % SPEED	<b>30</b> mph	<b>49</b> km/h
95 % SPEED	<b>33</b> mph	<b>53</b> km/h

Location Map



# Cook St between Quadra St and Linwood Ave

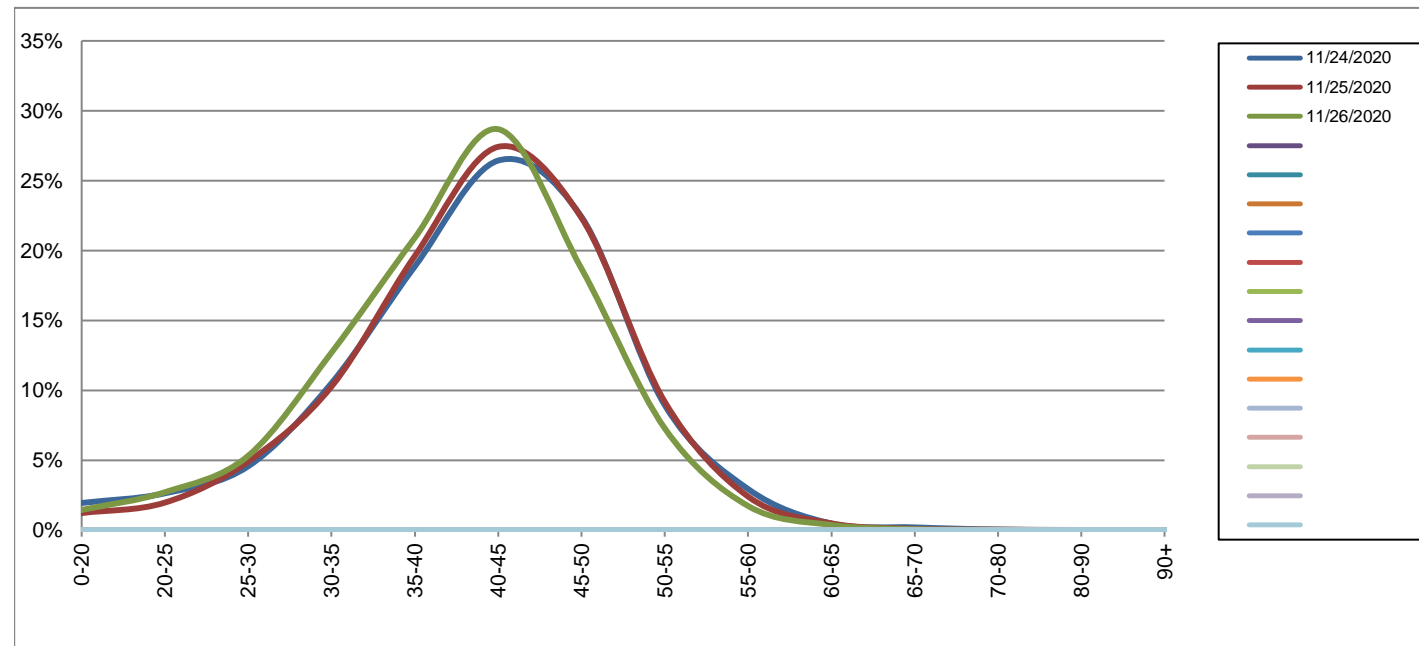
Northbound

November 24, 2020 to November 26, 2020

Daily Speed Bin Percentages															Daily Speed Bin Volumes														Total	Avg.
Bin #	1	2	3	4	5	6	7	8	9	10	11	12	13	14	1	2	3	4	5	6	7	8	9	10	11	12	13	14	Volume	Speed
Bin Speeds	0-20	20-25	25-30	30-35	35-40	40-45	45-50	50-55	55-60	60-65	65-70	70-80	80-90	90+	0-20	20-25	25-30	30-35	35-40	40-45	45-50	50-55	55-60	60-65	65-70	70-80	80-90	90+		
11/24/2020	1.9%	2.6%	4.6%	10.5%	18.9%	26.4%	22.4%	8.9%	2.9%	0.5%	0.2%	0.0%	0.0%	0.0%	135	183	317	729	1308	1833	1554	620	204	33	14	3	0	0	6933	41
11/25/2020	1.2%	2.0%	4.9%	10.3%	19.6%	27.4%	22.3%	9.2%	2.4%	0.5%	0.1%	0.0%	0.0%	0.0%	85	137	341	713	1361	1903	1551	637	167	34	7	3	1	0	6940	42
11/26/2020	1.4%	2.7%	5.3%	12.7%	20.9%	28.7%	18.7%	7.3%	1.7%	0.4%	0.1%	0.0%	0.0%	0.0%	101	190	372	888	1462	2005	1308	509	121	26	5	2	1	0	6990	40
<b>Total</b>	1.5%	2.4%	4.9%	11.2%	19.8%	27.5%	21.2%	8.5%	2.4%	0.4%	0.1%	0.0%	0.0%	0.0%	321	510	1030	2330	4131	5741	4413	1766	492	93	26	8	2	0	20863	41

## Speed Data Summary

Bin #	1	2	3	4	5	6	7	8	9	10	11	12	13	14	Total
Bin Speeds	0-20	20-25	25-30	30-35	35-40	40-45	45-50	50-55	55-60	60-65	65-70	70-80	80-90	90+	
Survey Total	321	510	1030	2330	4131	5741	4413	1766	492	93	26	8	2	0	20863
% Total	1.5%	2.4%	4.9%	11.2%	19.8%	27.5%	21.2%	8.5%	2.4%	0.4%	0.1%	0.0%	0.0%	0.0%	100%
Accumulated %	1.5%	4.0%	8.9%	20.1%	39.9%	67.4%	88.6%	97.0%	99.4%	99.8%	100.0%	100.0%	100.0%	100%	
Inverse Accum. %	98.5%	96.0%	91.1%	79.9%	60.1%	32.6%	11.4%	3.0%	0.6%	0.2%	0.0%	0.0%	0.0%	0.0%	
Average Speed	41 KM/H														



Site notes:

# Cook St between Quadra St and Linwood Ave

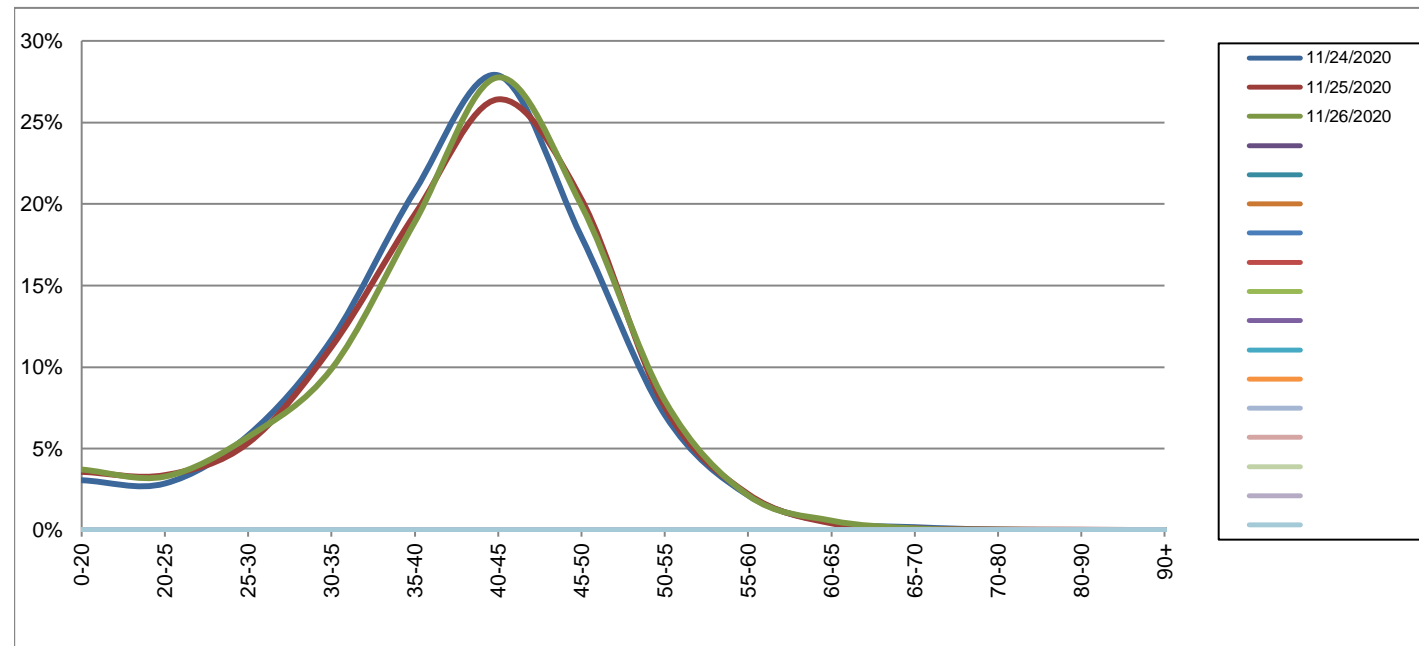
Southbound

November 24, 2020 to November 26, 2020

Daily Speed Bin Percentages															Daily Speed Bin Volumes														Total	Avg.
Bin #	1	2	3	4	5	6	7	8	9	10	11	12	13	14	1	2	3	4	5	6	7	8	9	10	11	12	13	14	Volume	Speed
Bin Speeds	0-20	20-25	25-30	30-35	35-40	40-45	45-50	50-55	55-60	60-65	65-70	70-80	80-90	90+	0-20	20-25	25-30	30-35	35-40	40-45	45-50	50-55	55-60	60-65	65-70	70-80	80-90	90+		
11/24/2020	3.1%	2.9%	5.8%	11.7%	20.8%	27.9%	18.0%	7.1%	2.1%	0.5%	0.2%	0.0%	0.0%	0.0%	198	185	376	755	1344	1802	1162	457	138	31	12	2	0	0	6462	40
11/25/2020	3.6%	3.4%	5.3%	11.2%	19.4%	26.4%	20.3%	7.6%	2.2%	0.4%	0.1%	0.0%	0.0%	0.0%	229	216	342	719	1239	1690	1298	484	142	27	7	3	2	0	6398	40
11/26/2020	3.7%	3.3%	5.7%	9.9%	18.9%	27.8%	19.9%	8.0%	2.1%	0.6%	0.1%	0.0%	0.0%	0.0%	240	212	369	638	1219	1791	1284	513	138	38	7	2	1	0	6452	40
<b>Total</b>	<b>3.5%</b>	<b>3.2%</b>	<b>5.6%</b>	<b>10.9%</b>	<b>19.7%</b>	<b>27.4%</b>	<b>19.4%</b>	<b>7.5%</b>	<b>2.2%</b>	<b>0.5%</b>	<b>0.1%</b>	<b>0.0%</b>	<b>0.0%</b>	<b>0.0%</b>	<b>667</b>	<b>613</b>	<b>1087</b>	<b>2112</b>	<b>3802</b>	<b>5283</b>	<b>3744</b>	<b>1454</b>	<b>418</b>	<b>96</b>	<b>26</b>	<b>7</b>	<b>3</b>	<b>0</b>	<b>19312</b>	<b>40</b>

## Speed Data Summary

Bin #	1	2	3	4	5	6	7	8	9	10	11	12	13	14	Total
Bin Speeds	0-20	20-25	25-30	30-35	35-40	40-45	45-50	50-55	55-60	60-65	65-70	70-80	80-90	90+	
Survey Total	667	613	1087	2112	3802	5283	3744	1454	418	96	26	7	3	0	19312
% Total	3.5%	3.2%	5.6%	10.9%	19.7%	27.4%	19.4%	7.5%	2.2%	0.5%	0.1%	0.0%	0.0%	0.0%	100%
Accumulated %	3.5%	6.6%	12.3%	23.2%	42.9%	70.2%	89.6%	97.2%	99.3%	99.8%	99.9%	100.0%	100.0%	100%	
Inverse Accum. %	96.5%	93.4%	87.7%	76.8%	57.1%	29.8%	10.4%	2.8%	0.7%	0.2%	0.1%	0.0%	0.0%	0.0%	
Average Speed	40 KM/H														



Site notes:



**Cook St between Quadra St and Linwood Ave**

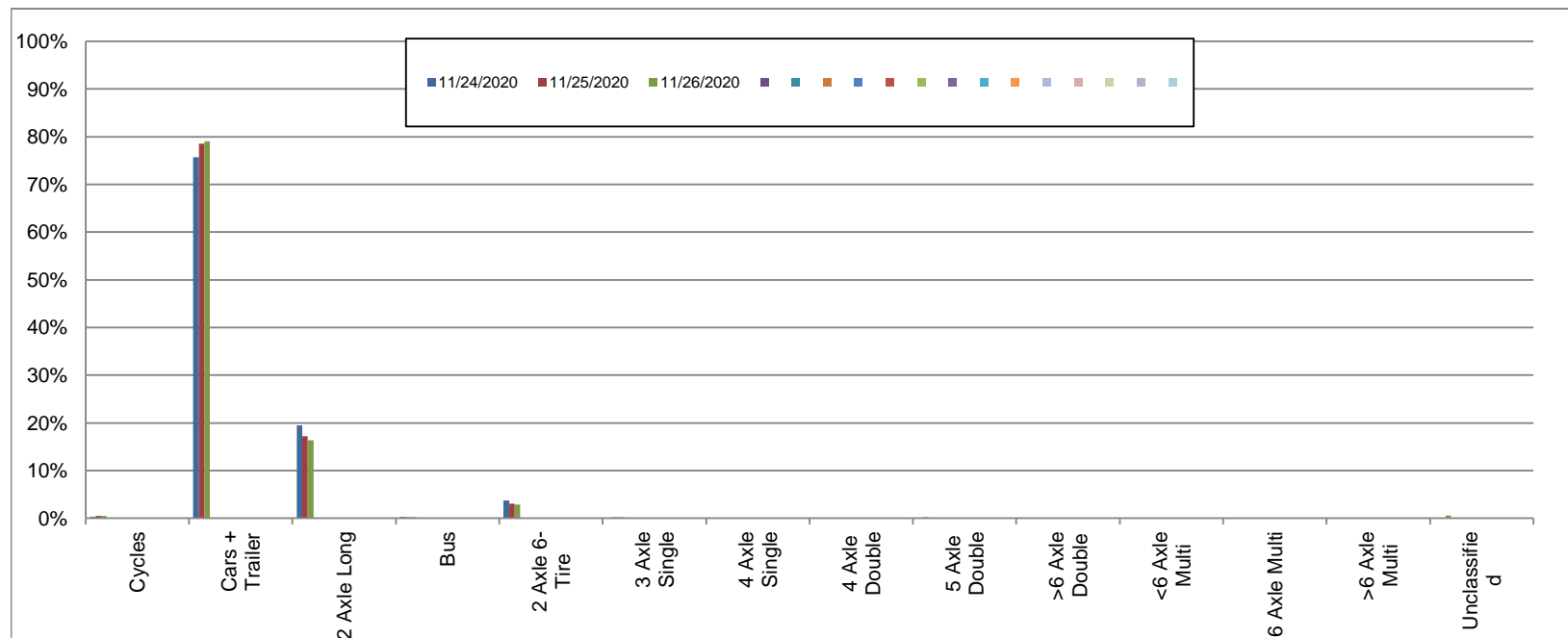
Northbound

November 24, 2020 to November 26, 2020

Daily Class Bin Percentages															Daily Class Bin Volumes											Total Volume			
Bin #	1	2	3	4	5	6	7	8	9	10	11	12	13	14	1	2	3	4	5	6	7	8	9	10	11		12	13	14
Bin Class	Cycles	Cars + Trailer	2 Axle Long	Bus	2 Axle 6-Tire	3 Axle Single	4 Axle Single	4 Axle Double	5 Axle Double	>6 Axle Double	<6 Axle Multi	6 Axle Multi	>6 Axle Multi	Unclassified	Cycles	Cars + Trailer	2 Axle Long	Bus	2 Axle 6-Tire	3 Axle Single	4 Axle Single	4 Axle Double	5 Axle Double	>6 Axle Double	<6 Axle Multi	6 Axle Multi	>6 Axle Multi	Unclassified	
11/24/2020	0.3%	75.7%	19.5%	0.3%	3.7%	0.1%	0.0%	0.1%	0.1%	0.0%	0.0%	0.0%	0.0%	0.0%	24	5245	1353	20	259	7	3	9	10	2	0	0	0	1	6933
11/25/2020	0.4%	78.6%	17.2%	0.2%	3.0%	0.2%	0.0%	0.1%	0.2%	0.0%	0.0%	0.0%	0.0%	0.1%	31	5453	1192	14	210	17	2	5	12	0	0	0	0	4	6940
11/26/2020	0.5%	79.0%	16.3%	0.2%	2.9%	0.2%	0.0%	0.2%	0.1%	0.0%	0.0%	0.0%	0.0%	0.6%	37	5523	1142	15	201	12	0	11	8	1	0	0	1	39	6990
<b>Total</b>	<b>0.4%</b>	<b>77.8%</b>	<b>17.7%</b>	<b>0.2%</b>	<b>3.2%</b>	<b>0.2%</b>	<b>0.0%</b>	<b>0.1%</b>	<b>0.1%</b>	<b>0.0%</b>	<b>0.0%</b>	<b>0.0%</b>	<b>0.0%</b>	<b>0.2%</b>	<b>92</b>	<b>16221</b>	<b>3687</b>	<b>49</b>	<b>670</b>	<b>36</b>	<b>5</b>	<b>25</b>	<b>30</b>	<b>3</b>	<b>0</b>	<b>0</b>	<b>1</b>	<b>44</b>	<b>20863</b>

**Class Data Summary**

Bin #	1	2	3	4	5	6	7	8	9	10	11	12	13	14	Total Volume
Bin Class	Cycles	Cars + Trailer	2 Axle Long	Bus	2 Axle 6-Tire	3 Axle Single	4 Axle Single	4 Axle Double	5 Axle Double	>6 Axle Double	<6 Axle Multi	6 Axle Multi	>6 Axle Multi	Unclassified	Total Volume
<b>Survey Total</b>	92	16221	3687	49	670	36	5	25	30	3	0	0	1	44	20863
<b>% Total</b>	0.4%	77.8%	17.7%	0.2%	3.2%	0.2%	0.0%	0.1%	0.1%	0.0%	0.0%	0.0%	0.0%	0.2%	100%
<b>Accumulated %</b>	0.4%	78.2%	95.9%	96.1%	99.3%	99.5%	99.5%	99.6%	99.8%	99.8%	99.8%	99.8%	99.8%	100.0%	
<b>Inv. Accum. %</b>	99.6%	21.8%	4.1%	3.9%	0.7%	0.5%	0.5%	0.4%	0.2%	0.2%	0.2%	0.2%	0.2%	0.0%	



**Classification Descriptions**

Bin #	Bin Description
1	Motorcycles
2	Passenger cars, including those with recreational trailers
3	2-axle pick-ups, vans, and RVs, including those with recreational trailers
4	Buses
5	2-axle, 6-tire single units
6	3-axle single units
7	4-axle single units
8	3-axle or 4-axle double unit
9	5-axle double unit
10	6-, 7-, or 8-axle double unit
11	5-axle multiple unit
12	6-axle multiple unit
13	7-or-more-axle multiple unit
14	Vehicles that could not be classified

Site notes:



**Cook St between Quadra St and Linwood Ave**

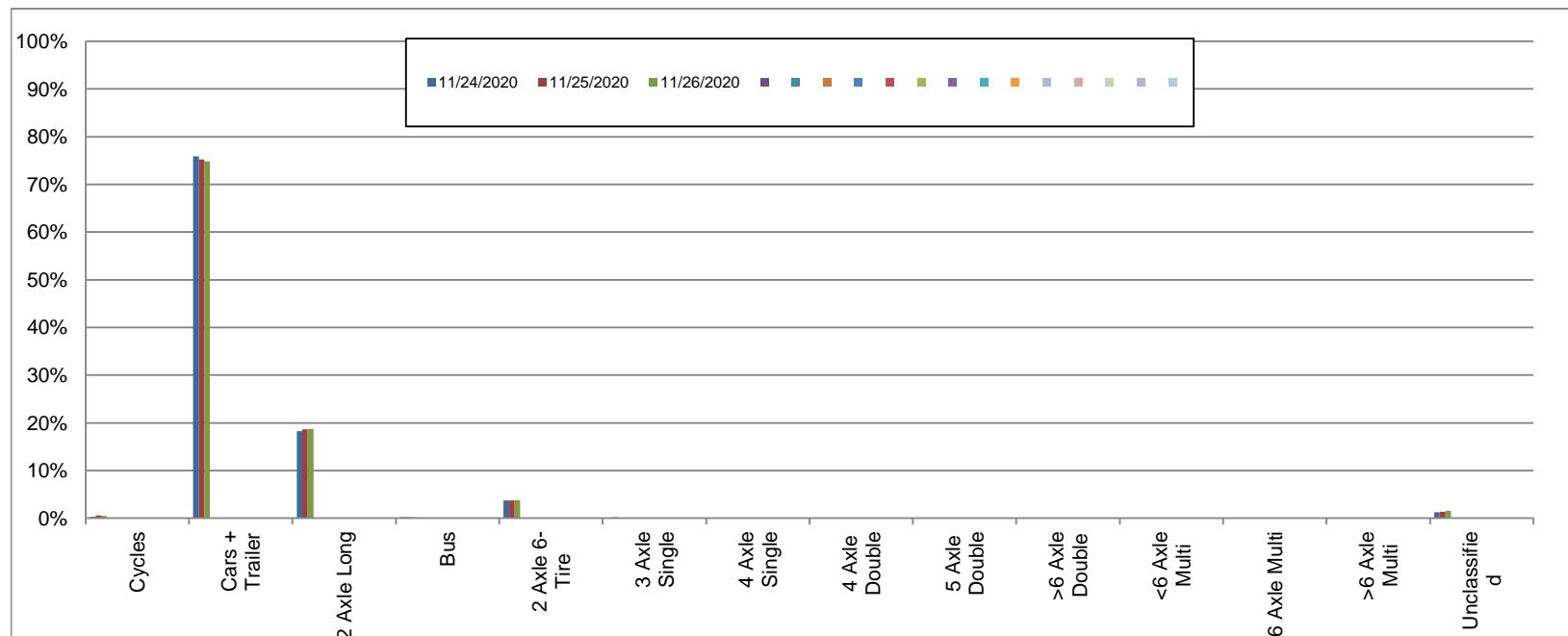
Southbound

November 24, 2020 to November 26, 2020

Daily Class Bin Percentages															Daily Class Bin Volumes														
Bin #	1	2	3	4	5	6	7	8	9	10	11	12	13	14	1	2	3	4	5	6	7	8	9	10	11	12	13	14	Total Volume
Bin Class	Cycles	Cars + Trailer	2 Axle Long	Bus	2 Axle 6-Tire	3 Axle Single	4 Axle Single	4 Axle Double	5 Axle Double	>6 Axle Double	<6 Axle Multi	6 Axle Multi	>6 Axle Multi	Unclassified	Cycles	Cars + Trailer	2 Axle Long	Bus	2 Axle 6-Tire	3 Axle Single	4 Axle Single	4 Axle Double	5 Axle Double	>6 Axle Double	<6 Axle Multi	6 Axle Multi	>6 Axle Multi	Unclassified	
11/24/2020	0.3%	75.9%	18.3%	0.2%	3.7%	0.1%	0.0%	0.1%	0.1%	0.0%	0.0%	0.0%	0.0%	1.2%	18	4905	1181	12	241	8	2	7	8	2	0	0	0	78	6462
11/25/2020	0.5%	75.2%	18.6%	0.2%	3.7%	0.2%	0.0%	0.1%	0.1%	0.0%	0.0%	0.0%	0.0%	1.4%	35	4810	1190	11	237	11	0	7	9	0	0	0	0	88	6398
11/26/2020	0.5%	74.8%	18.8%	0.2%	3.8%	0.1%	0.0%	0.1%	0.1%	0.0%	0.0%	0.0%	0.0%	1.5%	33	4826	1211	14	246	8	0	7	9	0	0	0	1	97	6452
<b>Total</b>	<b>0.4%</b>	<b>75.3%</b>	<b>18.5%</b>	<b>0.2%</b>	<b>3.7%</b>	<b>0.1%</b>	<b>0.0%</b>	<b>0.1%</b>	<b>0.1%</b>	<b>0.0%</b>	<b>0.0%</b>	<b>0.0%</b>	<b>0.0%</b>	<b>1.4%</b>	<b>86</b>	<b>14541</b>	<b>3582</b>	<b>37</b>	<b>724</b>	<b>27</b>	<b>2</b>	<b>21</b>	<b>26</b>	<b>2</b>	<b>0</b>	<b>0</b>	<b>1</b>	<b>263</b>	<b>19312</b>

**Class Data Summary**

Bin #	1	2	3	4	5	6	7	8	9	10	11	12	13	14	Total Volume
Bin Class	Cycles	Cars + Trailer	2 Axle Long	Bus	2 Axle 6-Tire	3 Axle Single	4 Axle Single	4 Axle Double	5 Axle Double	>6 Axle Double	<6 Axle Multi	6 Axle Multi	>6 Axle Multi	Unclassified	Total Volume
<b>Survey Total</b>	86	14541	3582	37	724	27	2	21	26	2	0	0	1	263	19312
<b>% Total</b>	0.4%	75.3%	18.5%	0.2%	3.7%	0.1%	0.0%	0.1%	0.1%	0.0%	0.0%	0.0%	0.0%	1.4%	100%
<b>Accumulated %</b>	0.4%	75.7%	94.3%	94.5%	98.2%	98.4%	98.4%	98.5%	98.6%	98.6%	98.6%	98.6%	98.6%	100.0%	
<b>Inv. Accum. %</b>	99.6%	24.3%	5.7%	5.5%	1.8%	1.6%	1.6%	1.5%	1.4%	1.4%	1.4%	1.4%	1.4%	0.0%	



**Classification Descriptions**

Bin #	Bin Description
1	Motorcycles
2	Passenger cars, including those with recreational trailers
3	2-axle pick-ups, vans, and RVs, including those with recreational trailers
4	Buses
5	2-axle, 6-tire single units
6	3-axle single units
7	4-axle single units
8	3-axle or 4-axle double unit
9	5-axle double unit
10	6-, 7-, or 8-axle double unit
11	5-axle multiple unit
12	6-axle multiple unit
13	7-or-more-axle multiple unit
14	Vehicles that could not be classified

Site notes: